



Beale Road, London, E3

BUTLER & STAG



Set on the first floor of a well-maintained development in the quiet cul-de-sac of Ranwell Close, Bow, this beautifully finished three-bedroom, two-bathroom apartment offers 933 sq ft of stylish, contemporary living just moments from the green open spaces of Victoria Park.



Leasehold

- First Floor Apartment
- Three Bedrooms
- Semi Open Plan Concept Living
- Oak Accents Running Throughout The Property - Flooring/Doors/Furniture
- 933 Sq/Ft Internal Living Space
- Two Stylish Bathrooms
- Victoria Park A Moments Walk Away
- Chain Free

Thoughtfully designed and finished to a high standard throughout, the property features elegant oak accents that run seamlessly across the floors, doors, and bespoke furniture/joinery, lending a warm and cohesive aesthetic to the entire space.

The spacious semi-open-plan living and dining area is perfect for modern living and entertaining, with large windows allowing natural light to flood the room. The sleek, fully fitted kitchen is both functional and sophisticated, with integrated appliances and ample storage.

The three bedrooms offer great sized accommodation. Two well-appointed bathrooms complete the property.

Situated on the fringe of Victoria Park, one of London's most loved green spaces, and within easy reach of Roman Road Market, transport links at Mile End and Bow Road stations, and a host of local amenities, this apartment combines peaceful residential living with excellent connectivity and lifestyle appeal.

A rare opportunity to own a turnkey home in a sought-after East London location.

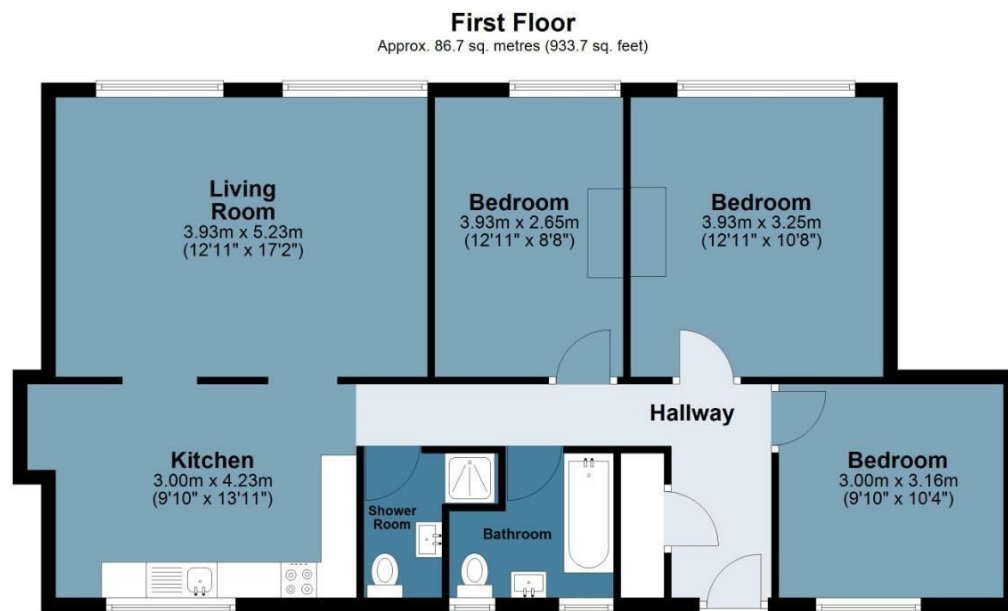




Ranwell Close

Approx. Gross Internal Area 86.7 Sq M (933.7 Sq Ft)

BUTLER & STAG



Measurements are approximate and for illustration purposes only. While we do not doubt the accuracy and completeness, we advise you conduct a careful independent assessment of the property to determine monetary value.
© @modephoto.uk www.modephoto.co.uk

IMPORTANT NOTICE - These particulars have been prepared in good faith and they are not intended to constitute part of an offer or contract. We have not performed a structural survey on this property and the services, appliances and specific fittings have not been tested. All photographs, measurements, floor plans and distances referred to are given as a guide and should not be relied upon.

BUTLER & STAG

☎ 020 8102 1236

🏠 508 Roman Road, Bow, London, E3 5LU

✉ bow@butlerandstag.com

www.butlerandstag.uk